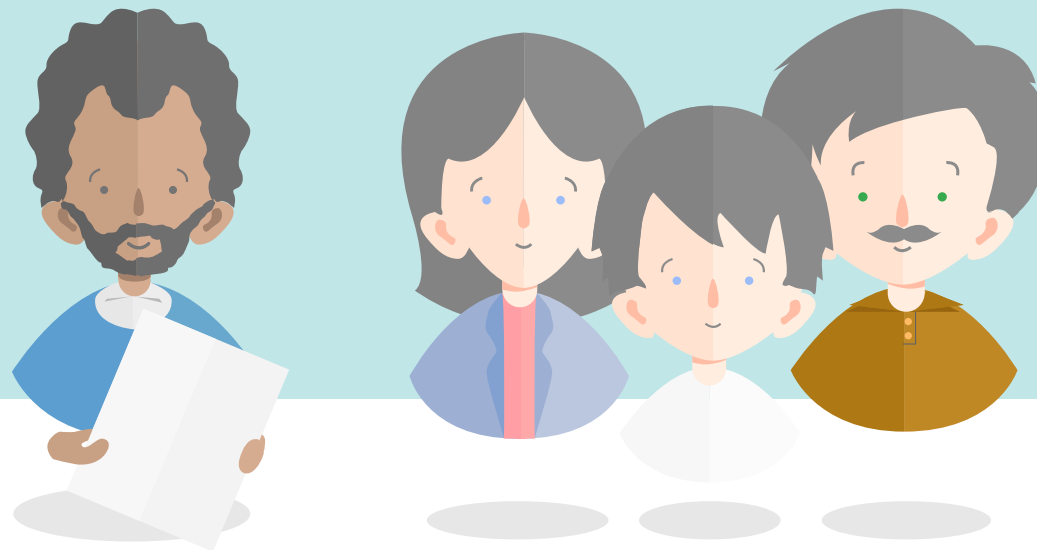


STRENGTHENING INTER-PARENTAL
RELATIONSHIPS & IMPROVING OUTCOMES FOR CHILDREN

A RESOURCE PACK FOR CREATING A LOCAL FAMILY OFFER



About this Resource Pack

Between 2015 and 2017, 12 local authorities across England were involved in the DWP-funded **Local Family Offer** (LFO) programme. The programme gave them access to expert support from Innovation Unit and OnePlusOne, as well as funding to develop a Local Family Offer focused on improving the quality of inter-parental relationships (IPR) with a view to improving outcomes for children.

The Local Family Offer Resource Pack was created to gather and share the learning that the 12 LFO pilot sites have generated throughout their innovation journeys. It aims to provide inspiration and practical tools for system leaders, service managers and frontline practitioners across the country who believe that investing in supporting strong relationships between parents and co-parents is key to achieving good outcomes for children.

Three focus questions are at the heart of this resource pack:



WHY DOES SUPPORTING INTER-PARENTAL RELATIONSHIPS MATTER?

All LFO locality leads say that the evidence linking the quality of couple and co-parental relationships with children's outcomes was the strongest drive for investing in this agenda and a very powerful tool in persuading others of its importance.



'Parental Conflict, the impact on children and how local authorities can help' is a short film that sets out the evidence around inter-parental conflict and shares the experiences of two of the LFO pilot localities.



'Parental Conflict, the impact on children' is a slide deck with some clear and simple messages about the evidence on inter-parental conflict.

These resources will be helpful for those who are weighing the pros and cons of investing in inter-parental relationship support and those who want to persuade people around them of the importance of this agenda.

It should help you to:

- Consider how investing in a relationship support offer will help achieve positive outcomes for children and families in your area
- Make the case and grow awareness within your locality / service for why supporting good inter-parental relationships should be a priority

The slides are designed so that you can use them in part or in whole to prompt and support conversations in your locality.

You can access the slide deck [here](#).

WHAT SHOULD BE THE FOCUS IN OUR LOCAL AREA?

As part of the LFO programme locality teams were invited to use an Opportunity Assessment Tool to engage with their local data and make sense of their local case for change. This proved really helpful in targeting their local offers.




The Opportunity Assessment Tool will be helpful to those who are persuaded that supporting inter-parental relationships is important and want to think in more detail about how and where to focus efforts within their local system. It should help you to:

- Develop a deeper understanding of local factors of vulnerability in inter-parental relationships and identify population groups in your local area that are most vulnerable to risks and poor outcomes
- Identify opportunities to add value to work you are doing with vulnerable groups by taking account of the couple relationship
- Develop a local case for change to get support for the IPR agenda from across your local system

The tool is designed to prompt strategic conversations about the focus of your local offer. Print it out, fill it in and talk with colleagues about what your data tells you about your local case for change.

You can access the Opportunity Assessment tool [here](#).


HOW CAN WE BEST CREATE A LOCAL FAMILY OFFER?

 The guide '[Creating a Local Family Offer - Lessons from Local Authority Pioneers](#)' draws together practical learning and examples from the 12 LFO pilot localities, clustered around three strands: Workforce Development, Pathways of Support and Culture, Systems and Processes.

If you are looking to plan and deliver the implementation of a local relationship offer, it should help you to:

- Consider the key components of developing a Local Family Offer to support the quality of inter-parental relationships
- Explore practical examples from the experience of LFO pilot localities
- Be aware of enabling factors and system conditions that will influence your chances of bringing about change in local services and in the wider system
- Think about how to evaluate the impact of your local offer

The guide is designed to help you chart your own journey towards the content that is most useful and relevant to you.

 The [Appendix](#) contains tools, questionnaires, job descriptions and presentations that illustrate some of the innovations and processes described in the guide.

You can access '[Creating a Local Family Offer - Lessons from Local Authority Pioneers](#)' [here](#) and the [Appendix](#) [here](#).

Here are some ideas of how this guide might be useful for your role.



IF YOU ARE A SYSTEM LEADER

You can use the materials in the 'Why' section to engage colleagues in this agenda and produce a compelling local case for change using the Opportunity Assessment Tool.

IF YOU ARE A SERVICE MANAGER



The Opportunity Assessment Tool could help you to identify the target groups of parents who will most benefit from your relationship support offer. The case studies and materials from pilot localities contained in the 'How' section can help you to think about what kind of interventions would be most suitable for your target population, or provide some useful tips to ensure the right skills and systems are in place to reach the people who are most in need of this kind of support.



IF YOU ARE A FRONTLINE PRACTITIONER

The 'How' section will offer you information on why the IPR agenda is important to your work and some practical tools that can inform your interactions with parents. If you are already an expert on couple and co-parental relationships, you can share these materials with colleagues to raise their awareness of IPR support, and build their confidence in exploring these issues with parents.

Whatever your role in the system, we hope that you will find the emergent learning from this work both useful and motivating as you develop your own Local Family Offer.

Local authorities are now operating with severely limited resources. There is no doubt that this poses a serious challenge to the leaders and practitioners in the system to make space for and invest in approaches that are different from current practice. We hope that this guide will serve to demonstrate that investing in the quality of relationships is both a way of enhancing effectiveness and increasing the value for money of a broad range of local services and that it does not necessarily require expensive bolt-on interventions, but is most successful and impactful when it is embedded in the work that already goes on in services across the local system.

This guide was created by Innovation Unit and One Plus One.



About Innovation Unit

Innovation Unit is a not for profit social enterprise.

We create new solutions that enable more people to belong and contribute to thriving societies.

We develop alliances for change with places, organisations and systems, to ensure that innovation has lasting impact at scale.

www.innovationunit.org

About OnePlusOne

OnePlusOne is a research and innovation charity that is all about helping people to build stronger relationships. We do this by equipping them with the skills and knowledge they need, so that couples, parents and children can be happier, healthier and more successful.

Everything we do starts with monitoring relationship science across a range of sources such as primary research, data gathering and practice based intelligence to generate knowledge and insight about relationships. We use this to provide evidence based digital resources for the public, continuing professional development for practitioners and support to local authorities in developing services.

www.oneplusone.org.uk

Together we combine evidence with experience to create resources that help people improve their relationships, and empower them to make positive choices for themselves and their children.

RESOURCE PACK



THIS GUIDE IS PART OF THE RESOURCE PACK
FOR CREATING A LOCAL FAMILY OFFER